

B/A-Engine

EXISTING PARTS

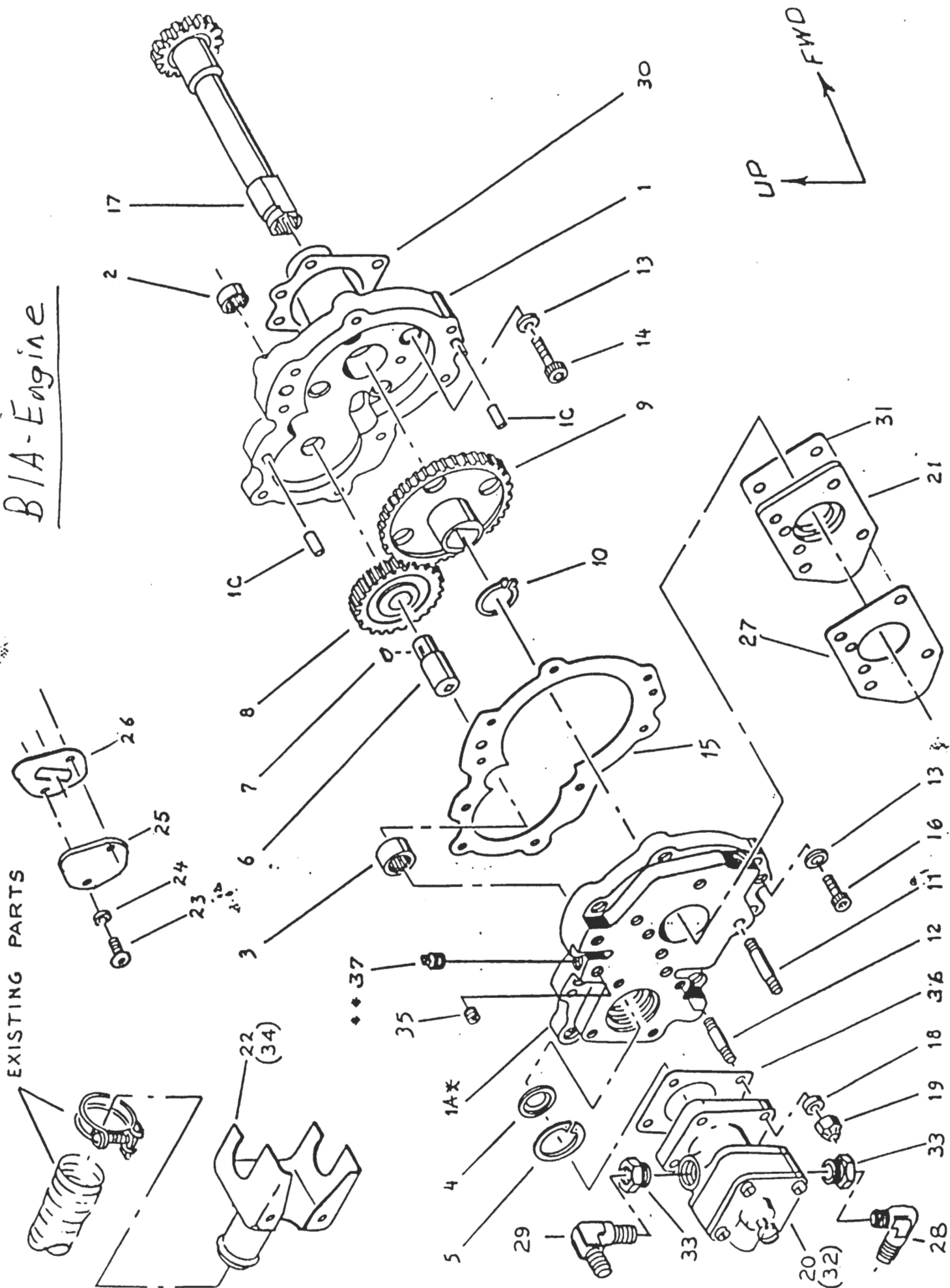


FIG. X

TURBO TWIN COMANCHE

Dual Drive Pad Assy

| Item No. | Part Number | No. Req'd Per A/C | Part Name |
|----------|-----------------------|----------------------|-------------------------|
| 1 | RJ 0032-2 | 1 | Gear Case - Fwd Section |
| | RJ 0033-2 | 1 | Gear Case - Aft Section |
| ** | RJ 0033 (Special) | 1 | Gear Case - Aft Section |
| | 7-0816-1 | 2 | Pin |
| 2 | M-861 | 1 | Bearing |
| 3 | B107 | 1 | Bearing |
| 4 | 24009 | 1 | Seal |
| 5 | 5000-112 | 1 | Snap Ring |
| 6 | RJ 0030 | 1 | Shaft |
| 7 | 213 | 1 | Key |
| 8 | RJ 0031 | 1 | Gear |
| 9 | RJ 0029 | 1 | Gear |
| 10 | 5101-87 | 1 | Snap Ring |
| 11 | RJ 0260 | 4 | Stud |
| 12 | RJ 0100 | 4 | Stud |
| 13 | RJ 0251 | 13 | Washer |
| 14 | LL22U058J16x2 | 4 | Screw |
| 15 | RJ 0116 | 1 | Gasket |
| 16 | LL22U058J12x2 | 9 | Screw |
| 17 | RJ 0040 | 1 | Gear Shaft |
| 18 | AN960-416 | 8 | Washer |
| 19 | AN365-428 | 8 | Nut |
| 20 | * RG-15980-P1 23PSI @ | 2 | Fuel Pump |
| 21 | RJ 0615 | 2 | Spacer |
| 22 | RJ 0614-11 | 2 | Fuel Pump Shroud |
| 23 | LL22B066J16x2 | 4 | Cap Screw |
| 24 | AN960-616 | 4 | Washer |
| 25 | 65098 | 2 | Cover Plate |
| 26 | 60096 | 2 | Gasket |
| 27 | 751833 | 2 | Gasket - Prop. Gov. |
| 28 | AN822-4-4 | 2 | Elbow (Existing) |
| 29 | AN822-5-4 | 2 | Elbow (Existing) |
| 30 | 68315 | 2 | Gasket |
| 31 | 72053 | 2 | Gasket |
| *32 | S500 Type FCC-1 | 2 | Alt. Fuel Pump |
| *33 | AN912-9D | 4 | Bushing |
| *34 | RJ 0572-11 | 2 | Fuel Pump Shroud |
| 35 | AN932-3D | 2 | Plug |
| 36 | RJ 0118 | 2 | Gasket |
| **37 | AN913-2D | 2 | Plug |

RJ 0039-101
Assy, 2 Req'd
per A/C
**RJ 0039-104
Special

RJ-1045-2
OR -1
for CIA

2300 RPM

* RG-17980-P1 for CIA

* Used on Alt. Fuel Pump only.

** These parts are used only when the A/C is equipped with AC oil filters.